



COVID-19 DANCER HEALTH ASSESSMENT



**IF YOU HAVE NOT COMPLETED YOUR DAILY SCREENING
PLEASE OPEN YOUR CAMERA AND SCAN THE CODE TO GO
DIRECTLY TO THE SCREENING LINK.**

SCAN



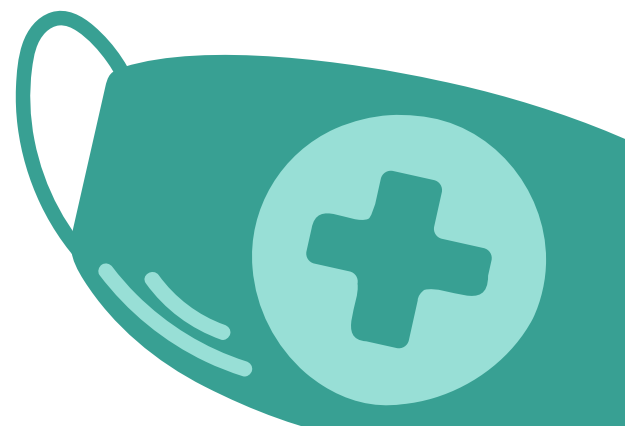
THE HEALTH AND SAFETY OF OUR STUDIO, STUDENTS, FACULTY, STAFF, PARENTS AND COMMUNITY ARE OUR TOP PRIORITY. CHECK OUT WHAT WE ARE DOING TO KEEP YOU AND YOUR LOVED ONES SAFE!

We will ensure all current infection prevention and control practices are adhered to. This includes, but is not limited to:

- Daily cleaning and disinfecting of all highly touched surfaces
- Daily cleaning and disinfecting of the entire facility
- State of the art floor cleaning vaporization system with safe and effective sanitizing agents
- Use of cleaning and disinfectant products that have a Drug Identification Number (DIN)
- Temperature checks upon arrival at our touch less infrared forehead thermometer
- Face coverings worn in all common areas
- Promoting proper hand hygiene
- Student screening
- Staggered class times
- All students and teachers will be provided with personal space with a diameter of 2 metres which keeps them physically distanced during class. They will also have an assigned space to place their belongings while in class.
- Maximum of 18 individuals (17 students and 1 teacher or 16 students and 2 teachers)
- Minimized personal items brought into the studio
- Any individual feeling unwell will not be permitted into the building



SAFE. STUDIOS. ONTARIO.



COVID-19 CLASS GUIDELINES

PRIOR TO ARRIVAL

Parents/guardians, faculty and staff must complete the following check each day before coming to the studio.

- Monitor for signs and symptoms of COVID-19
- Complete screening
- Label all personal belongings (dance bag, water bottle, dance shoes, etc.)
- All students will come dressed and ready for class. Please keep belongings to a minimum by only bringing a bag for dance shoes, a water bottle and outside clothes. The change rooms are currently closed.

SCREENING, DROP OFF & ARRIVAL

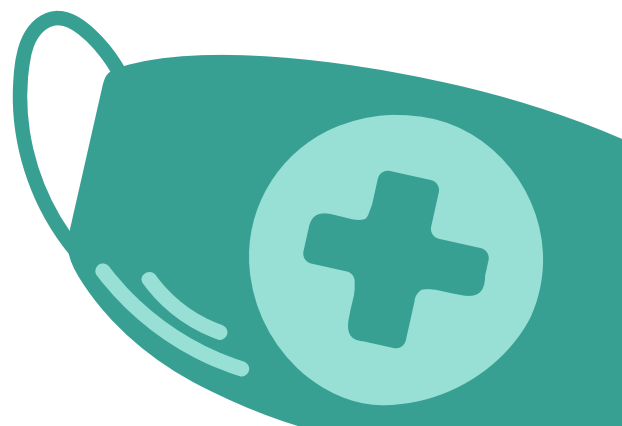
1. All students, faculty, staff and visitors must be screened electronically at home prior to arrival. Entry into the studio will not be permitted by anyone who has not previously screened. Any individuals who have any symptoms, have come in close contact with a person with symptoms of or confirmed COVID-19 in the past 14 days will be denied entry.
2. Drop off and pick up procedures will support physical distancing by occurring outside of the building. Please pull into the drive way with your vehicle and turn right. Loop around to your left and pull up beside the sidewalk in front of our building. Class participants may exit the vehicle onto the side walk which is clearly marked 2 metres apart. Students may slowly enter the building in a timely fashion and as soon as it is safe to do so.
3. All students, faculty, staff (and parents if necessary) must wear a face covering (mask) while entering the building and in all common areas. Face coverings are not required while dancing.
4. Temperature checks with our touch less infrared forehead thermometer upon arrival by all participants, staff and visitors.
5. Hand sanitizer must be used by all of those who enter the building. It is placed at the entrance into the building.
6. All students, staff and faculty must remove their outdoor shoes and place them on the shoe rack provided.
7. All students, staff and faculty must physically distance as they proceed down the hallway by observing the clearly marked arrows and foot prints.
8. Once students arrive at the studio they must select a numbered box and locate the matching number around the sides of the room for their belongings (small bag and water bottle).

PROGRAMMING

1. Maximum of 18 individuals (17 students and 1 teacher or 16 students and 2 teachers)
2. All students and teachers will be provided with personal space with a diameter of 2 metres which keeps them physically distanced during class. They will also have an assigned space to place their belongings while in class.



SAFE. STUDIOS. ONTARIO.



COVID-19 CLASS GUIDELINES

HEALTH & SAFETY

We will ensure all current infection prevention and control practices are adhered to. This includes, but is not limited to:

- Daily cleaning and disinfecting all highly touched surfaces including doorknobs, light switches, toilet and faucet handles, regularly used equipment
- Daily cleaning and disinfecting of the facility
- State of the art floor cleaning system with safe and effective sanitizing agents to clean in between classes
- Only use cleaning and disinfectant products that have a Drug Identification Number (DIN)
- Temperature checks upon arrival at our touch less infrared forehead thermometer
- Promoting proper hand hygiene
- Student screening
- Staggered class times
- Personal dance space boxes of 6' x 6'6"
- Small class sizes with a maximum of 11 students and 1 teacher OR 10 students and 2 teachers per class
- Minimized personal items brought into the studio
- If an individual (student, faculty, staff, parent, visitor) are feeling unwell please refrain from coming to the studio. The student will not be permitted to attend or participate in any classes.

PICK UP

1. All students, faculty and staff must gather their belongings and take them home with them at the end of the day. No personal belongings will be permitted to stay in the building.
2. Pick up of students happens outside of the building. Students shall exit the building in the same way that they entered the building. Parents/guardians shall follow the same guidelines for pick up as for drop off. Parents/guardians will wait inside their vehicle while students safely exit the building.

SUSPECTED COVID-19

If a student begins to experience symptoms of COVID-19 while in class we will do the following.

1. Immediately separate and isolate the student with a distance of at least 2 metres
2. Contact parent/guardian for immediate pick up
3. Contact the local public health unit
4. Clean and disinfect all of the space
5. Students and staff who have been exposed to a confirmed case of COVID-19 will be excluded from the program setting for 14 days

THANK YOU FOR TAKING THE TIME TO CAREFULLY READ AND BECOME FAMILIAR WITH OUR COVID-19 CLASS GUIDELINE. QUESTIONS ABOUT COVID-19 PROCEDURES MAY BE DIRECTED TO: WELLINGTON-DUFFERIN-GUELPH PUBLIC HEALTH UNIT, 1-800-265-7293



SAFE. STUDIOS. ONTARIO.

